

Research Prioritisation in Collaboration with the Public



Sacha Webb
Dr Sarah McNeill
Dr Laura Ewart
+PAG



Aims for Today



- Learn about one way in which Local Authorities are getting involved in academic research
- Learn about recruiting underserved groups for research involvement
- Understand the importance of embedding meaningful co-production in all stages of the research cycle
- Hear from the public about their experience of research involvement



What is an HDRC?

Aim

To establish a **health research function** within the council that will focus on **Wider Determinants of Health** in collaboration with surrounding universities and other partners.

UK Structure

30 HDRCs across the UK
National Institute for Health and Care Research (NIHR)

Leicestershire Structure

Development Year (pending approval 5 years, £5.25m)
Partnered with the Universities of Nottingham, Leicester and Loughborough
HDRC within BI

What is NIHR?

- Funded by the Department of Health and Social Care
- Aims to improve the health and wealth of the nation through research.

What are Wider Determinants of Health?

Many factors affect health and wellbeing in our daily lives. Our health is impacted by the environment we live in, the economy and our social relationships. These are what we call wider determinants of health.

Wider factors affecting health and wellbeing include:

Food security and diet

Housing and homelessness

Air and water pollution

Access to green and blue space

Climate change

Income

Social inclusion

Employment and working conditions

Transport methods



Research Prioritisation



Document Review

- Review standard strategic documents (Oct 2024)
- Identify key health challenges in Leicestershire, groups affected disproportionately and any linked WDoH.
- Engage with Public Advisory Group (Jan 2025)



Public Events

- **Public Assembly**
 - 15 March 2025
- **Youth Engagement**
 - April-May
 - 3 Schools
 - Youth facilitators



Decision Time

- Analyse findings from CA and YE (May 2025)
- Board and PAG approves final research priorities/streams (June 2025)

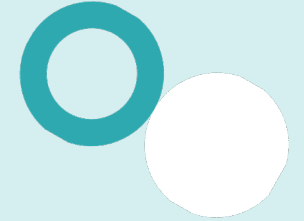
Governance



Public Assembly Recruitment



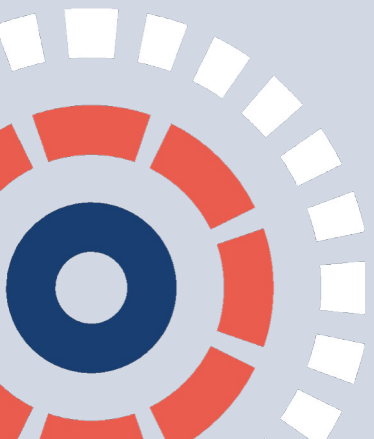
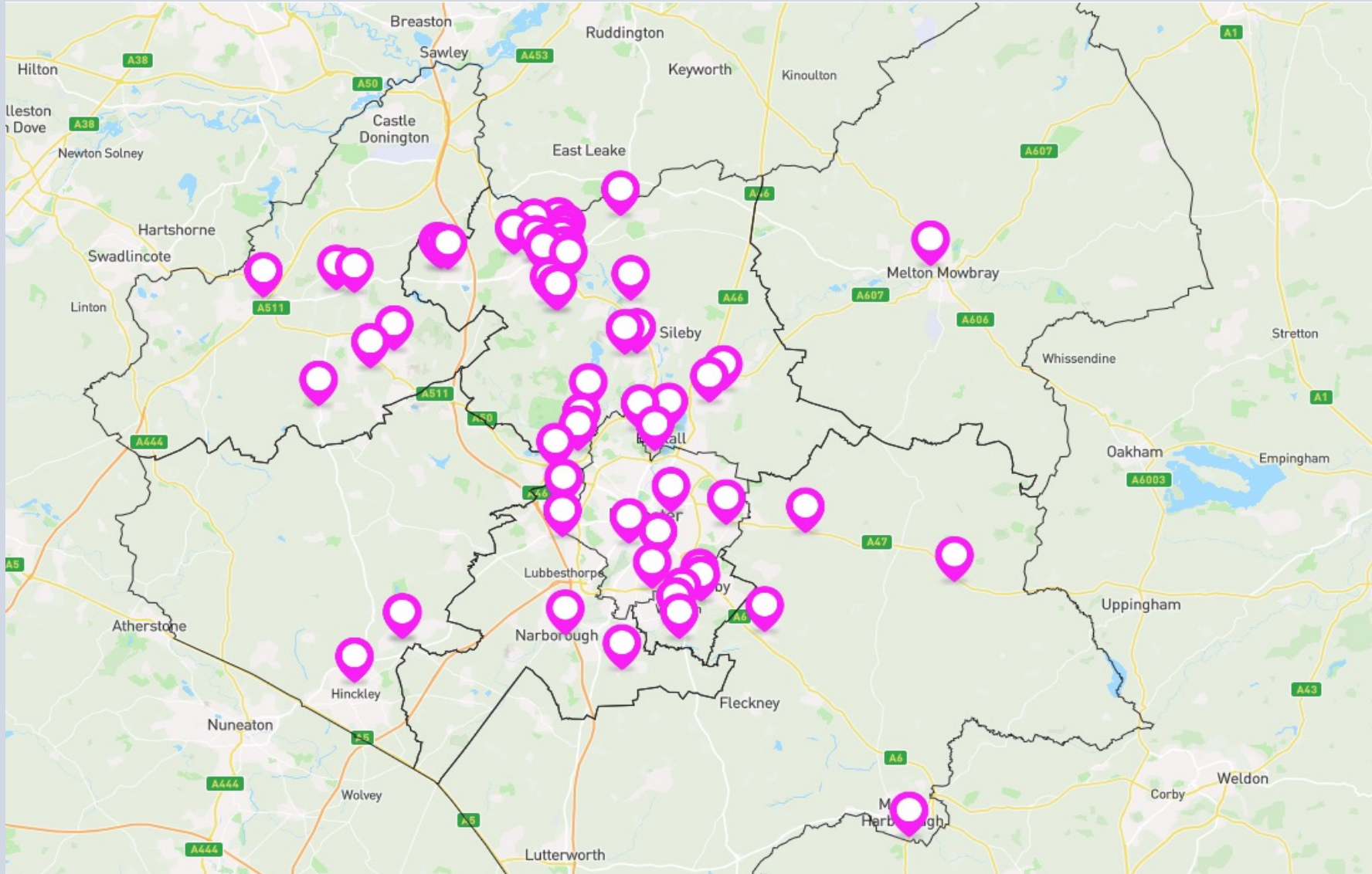
The recruitment process



To ensure we had a representative group, the recruitment process required several steps

1. Developed a protocol
2. Methodology agreed by the board
3. Created a recruitment survey
4. Stratified approach implemented to select participants
5. All participants were notified of the outcome



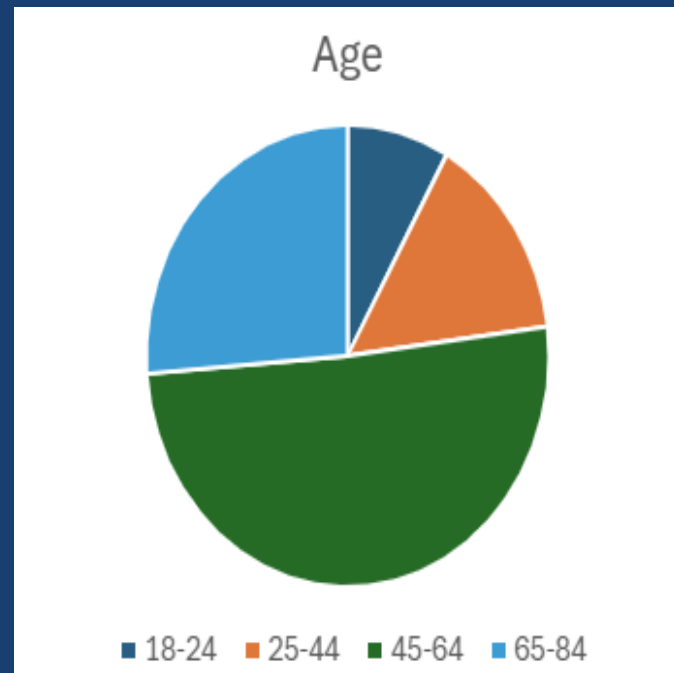
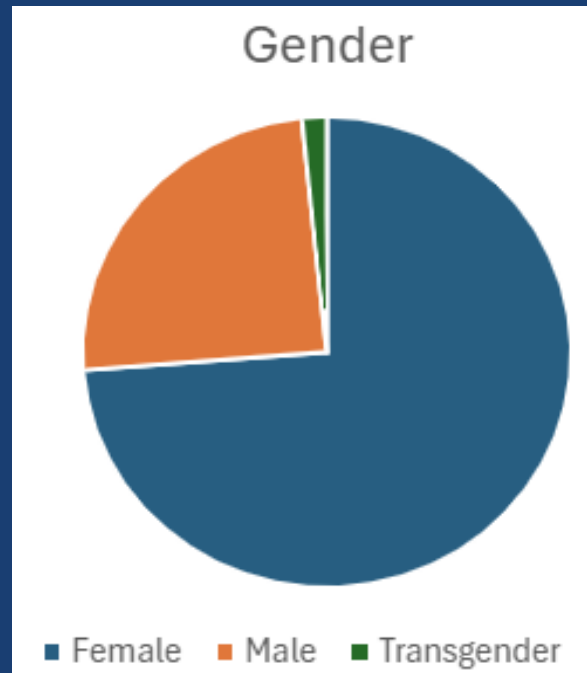


Recruitment

- People who identify as Lesbian, Gay, Bisexual or Transgender (LGBT) (12)
- People with a disability, including **people with a learning disability (34)**
- **People who are homeless (2)**
- **Victims of modern slavery**
- **Sex workers**
- **Vulnerable migrants**
- Carers (13)
- **People with severe mental illness (12)**
- **Prisoners**
- People who have experienced trauma (5)
- **Looked after children and care experienced adults (2)**
- **People living in poverty/deprivation (26)**
- A complex picture was identified around race and ethnicity but evidence of health inequalities being most common for people who are **Bangladeshi, Pakistani or Gypsy or Irish Travellers (12)**



Demographic Data of Participants

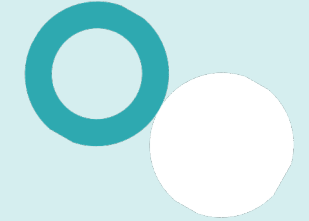


Ethnicity

To ensure a truly representative and inclusive assembly, diversity was prioritised. A range of communities, group leaders, cultural organisations and more were engaged with and as a result, the diverse composition brought together a wide range of lived experiences. Perspectives and cultural insights.



Youth Engagement



To recruit for these workshops, we:

1. **Developed a protocol**
2. **Created an accessible school brief to share with schools outlining the aims of the workshop**
3. **Collaborated with internal and external colleagues to identify school contacts**
4. **Recruited two young people to co-design and co-deliver the workshops**
5. **Coordinated with the schools to organise the workshops**
6. **Pastoral leads selected the young people involved in the workshops**



Summary

The public assembly and the youth engagement workshops were a huge success



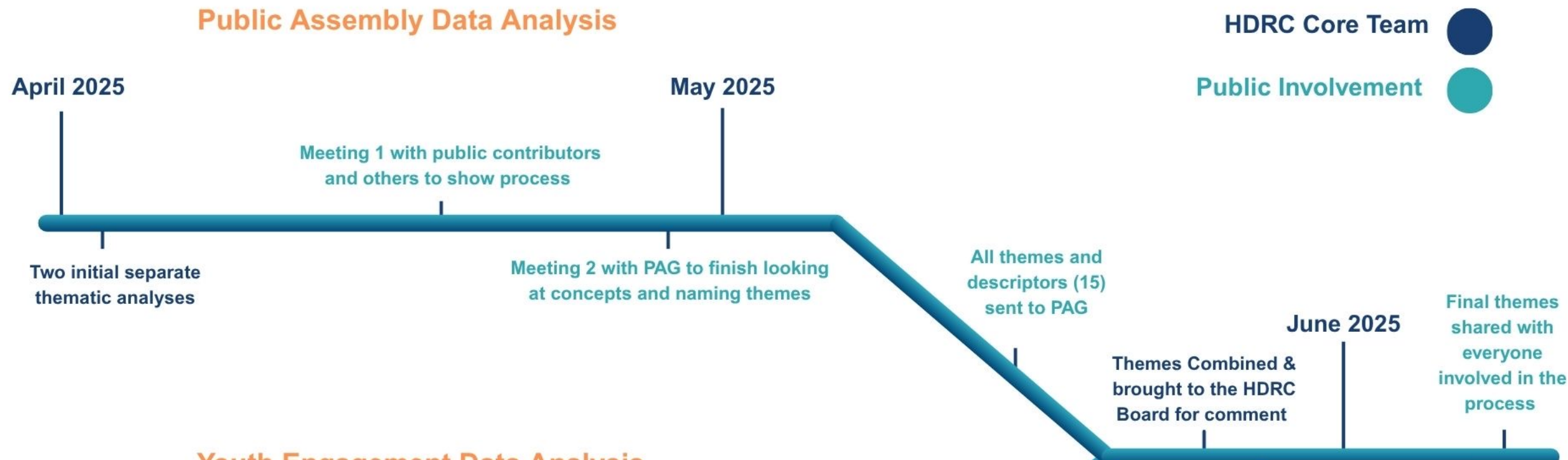


Analysis and Findings



Research Prioritisation - Data Analysis Process

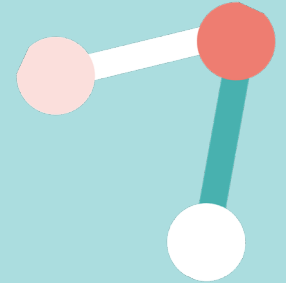
Public Assembly Data Analysis



Youth Engagement Data Analysis



HDRC Leicestershire Research Themes



Who is around us?

Spaces and places that influence health

Protecting, using, and living in the countryside and other green space

Spacious, affordable housing

Isolation and sense of community

Community empowerment and knowledge sharing

Community Safety

Inclusive opportunities to discover and pursue aspirations

Income and cost of living and thriving

Inclusive and accessible transport

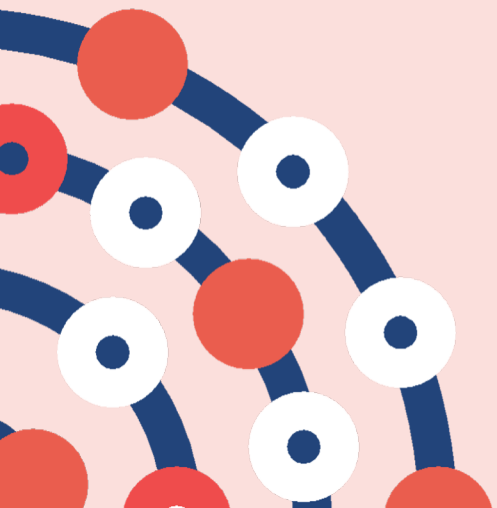
What is around us?

What are our opportunities?





Public Reflections



Activity

Imagine you are designing a co-produced piece of research for one of our topics.

How would you recruit underserved groups for co-design and involvement?

